



STATE OF TUBERCULOSIS IN MASSACHUSETTS

Bureau of Infectious Disease and Laboratory Sciences
Massachusetts Department of Public Health

MA Regional TB Update

October 26, 2022

Kavita Gadani Seabe, MPH
Epidemiologist

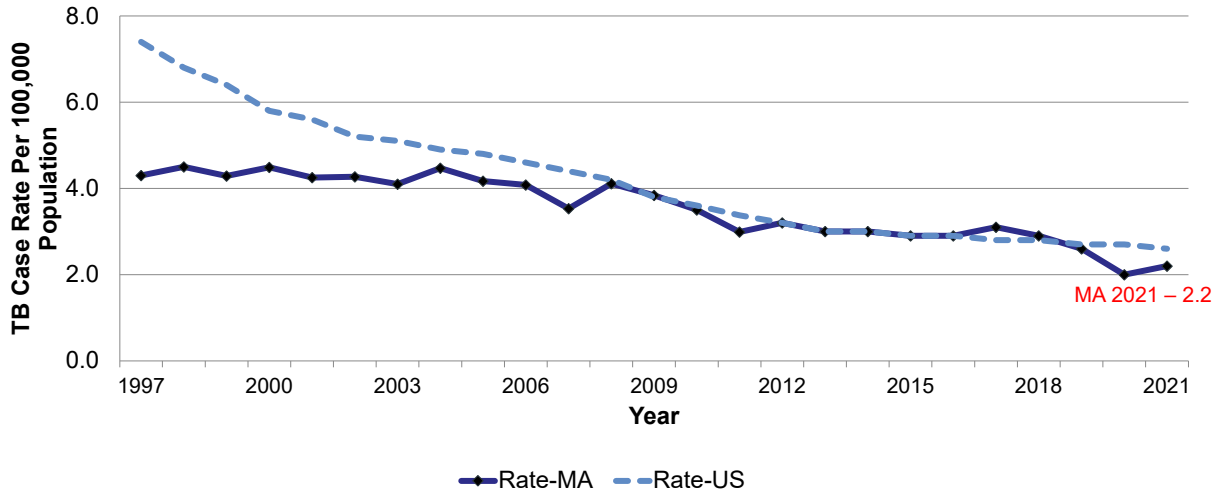
1

Active Tuberculosis Case Definition

- A case of TB is either:
 - Laboratory confirmed
 - Bacterial isolation or demonstration by nucleic acid amplification test of *M. tuberculosis* from a clinical specimen,*
 - Demonstration of acid-fast bacilli in a clinical specimen when a culture has not been or cannot be obtained or is falsely negative or contaminated.
 - OR
 - Clinically diagnosed meeting all the following criteria
 - A positive tuberculin skin test or positive interferon gamma release assay for *M. tuberculosis*
 - Signs and symptoms compatible with (TB) (e.g., abnormal chest radiograph or other chest imaging study, or clinical evidence of current disease)
 - Responds to treatment with two or more anti-TB medications
 - Completed a full diagnostic evaluation

2

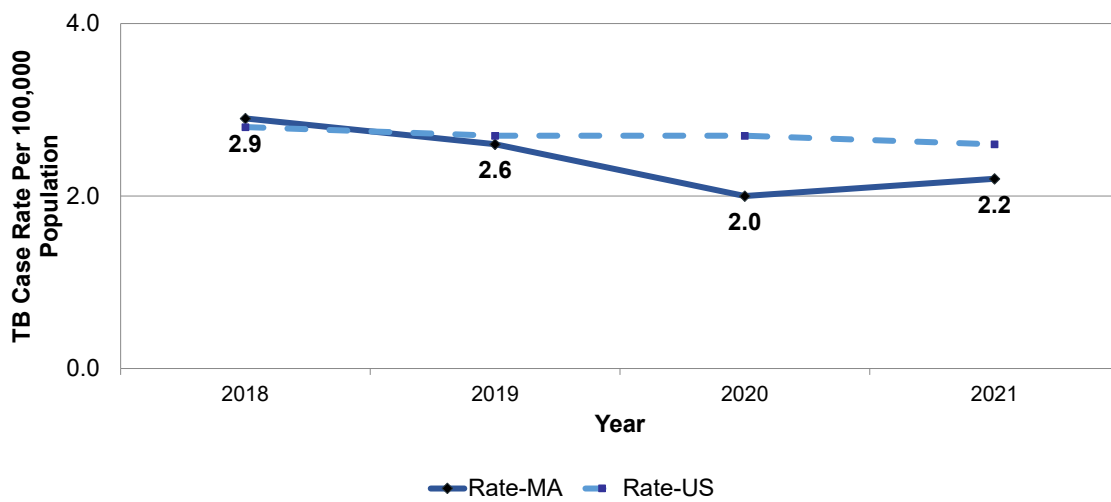
Rate of Tuberculosis Cases, United States and Massachusetts, 1997-2021



Data current as of 1 March 2022
Data gathered from Massachusetts Virtual Epidemiologic Network

3

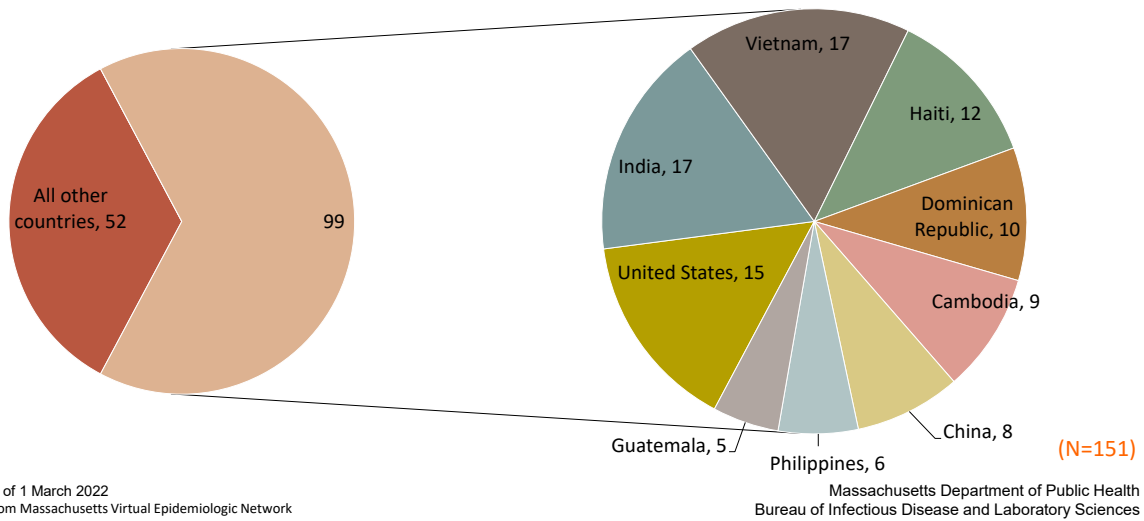
Rate of Tuberculosis Cases, United States and Massachusetts, 2018-2021



Data current as of 1 March 2022
Data gathered from Massachusetts Virtual Epidemiologic Network

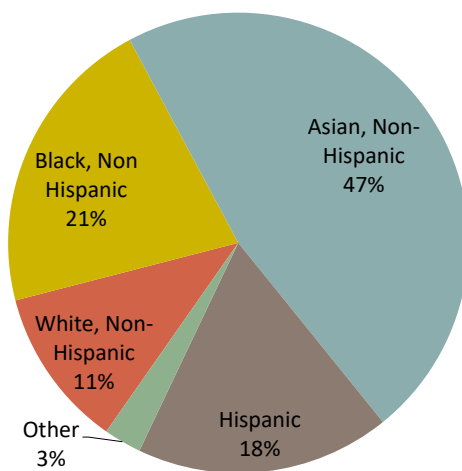
4

2021 cases by country of birth



5

Distribution of Tuberculosis Cases by Race/Ethnicity Massachusetts, 2021

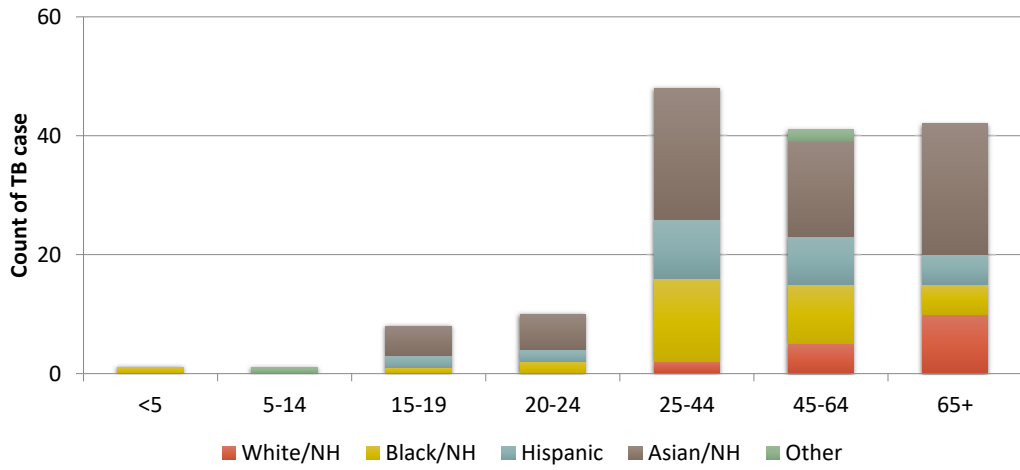


Data current as of 1 March 2022
Data gathered from Massachusetts Virtual Epidemiologic Network

(N=151)

6

TB Cases by Age, Race/Ethnicity Massachusetts, 2021



Data current as of 14 April 2022
Data gathered from Massachusetts Virtual Epidemiologic Network

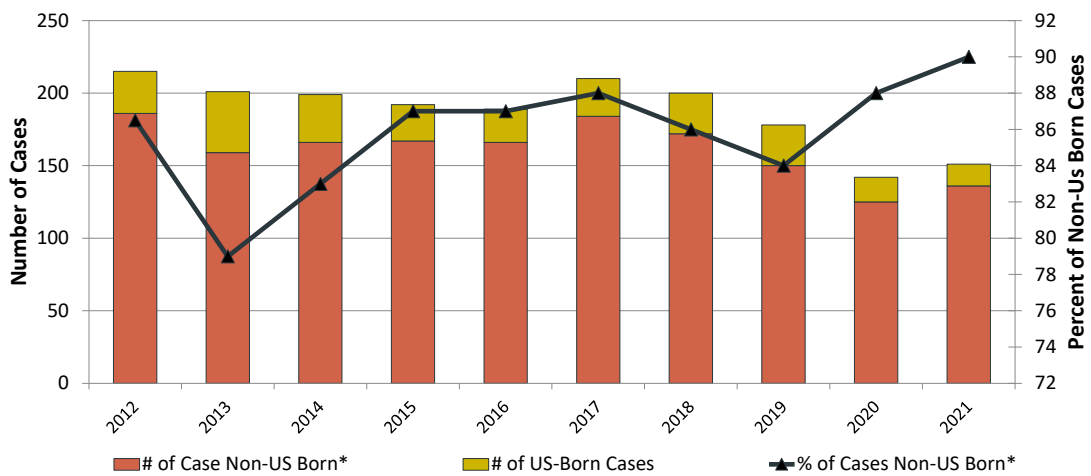
*NH – Non-Hispanic

(N=151)

Massachusetts Department of Public Health
Bureau of Infectious Disease and Laboratory Sciences

7

Trends in Tuberculosis Cases among Non-US Born* Persons, Massachusetts, 2012-2021

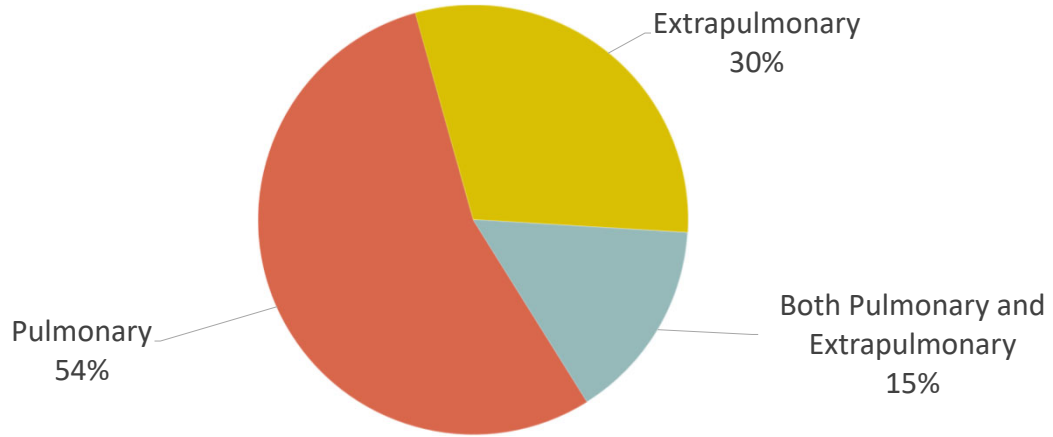


Data current as of 1 March 2022
Data gathered from Massachusetts Virtual Epidemiologic Network

*US Born cases include Puerto Rico

8

Distribution of TB Cases by Site of Disease Massachusetts, 2021



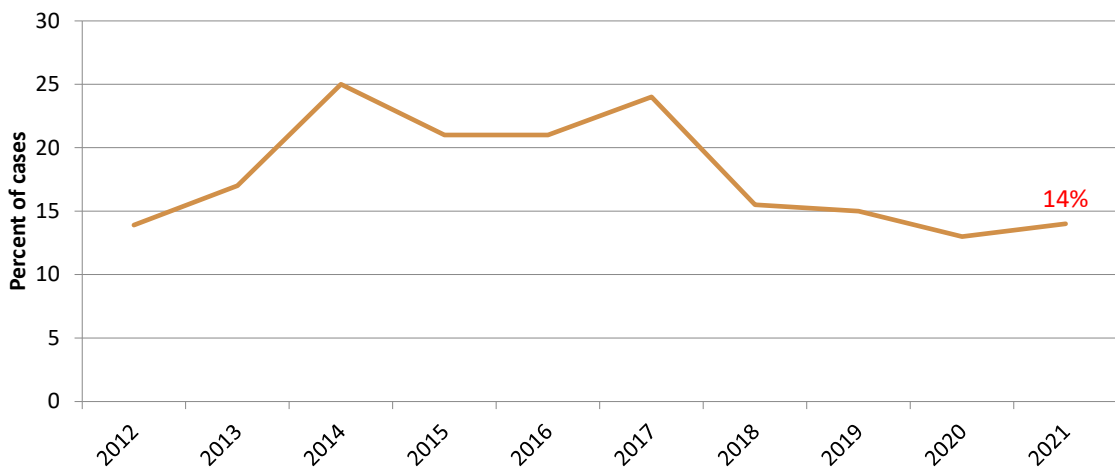
Data current as of 14 April 2022
Data gathered from Massachusetts Virtual Epidemiologic Network

(N=151)

Massachusetts Department of Public Health
Bureau of Infectious Disease and Laboratory Sciences

9

Trends in the Percentage of Culture Confirmed* Tuberculosis Cases with any Drug Resistance, Massachusetts, 2012–2021



Data current as of 1 March 2022
Data gathered from Massachusetts Virtual Epidemiologic Network

*TB cases with either a positive sputum culture or a positive culture of tissue/other body fluids

10

Connect with DPH



@MassDPH



Massachusetts Department of Public Health



DPH blog

<https://blog.mass.gov/publichealth>



www.mass.gov/dph

11



150 YEARS
OF ADVANCING
PUBLIC
HEALTH

Massachusetts Department of Public Health

Thank You!

Kavita Gadani Seabe

Kavita.M.Gadani@mass.gov

12